



COMMONWEALTH OF KENTUCKY
TRANSPORTATION CABINET
www.transportation.ky.gov/

Andy Beshear
GOVERNOR

Jim Gray
SECRETARY

March 15, 2022

CALL NO. 353
CONTRACT ID NO. 221016
ADDENDUM # 1

Subject: McLean County, FD04 075 0136 011-012
Letting March 24, 2022

(1) Added - Water Relocation Plans - Pages 91(a)-91(d) of 383

Proposal revisions are available at <http://transportation.ky.gov/Construction-Procurement/>.

If you have any questions, please contact us at 502-564-3500.

Sincerely,

Rachel Mills,

A handwritten signature in black ink that reads "Rachel Mills".

Rachel Mills, P.E.
Director
Division of Construction Procurement

RM:mr
Enclosures

McLEAN MIDDLE AND HIGH SCHOOL TURN LANE WATER LINE RELOCATION

NORTH McLEAN COUNTY WATER DISTRICT
McLEAN COUNTY, KENTUCKY
CONTRACT 652-22-01
JANUARY, 2022

CONTRACT 652-22-01
JANUARY, 2022

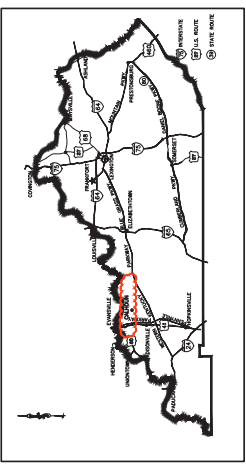
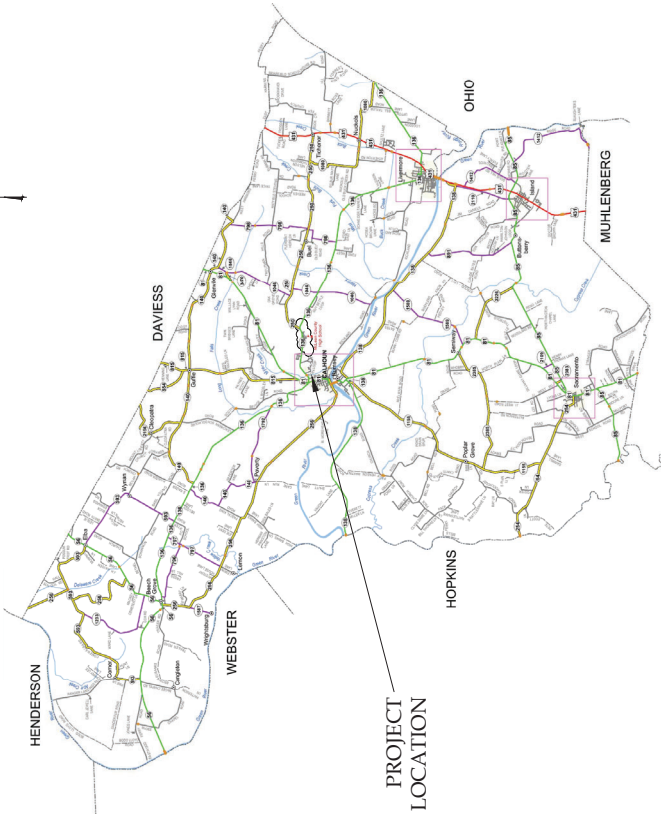
McLEAN MIDDLE AND HIGH SCHOOL
TURN LANE WATER LINE RELOCATION
NORTH McLEAN COUNTY WATER DISTRICT
McLEAN COUNTY, KENTUCKY
CONTRACT 652-22-01



BLDNOTE
THIS DRAWING WAS PREPARED BY AN ENGINEER EMPLOYED BY BELL ENGINEERING. ANY REVISIONS TO THIS DRAWING SHALL BE MADE BY THE ENGINEER OR A LICENSED PROFESSIONAL ENGINEER. THE ENGINEER'S SIGNATURE AND SEAL SHALL BE CONSIDERED LEGITIMATE ONLY IF SIGNED AND DATED BY THE REGISTRANT.

- CLIENT REVIEW
 BELL (A) REVIEW
 DIVISION OF WATER REVIEW
 CONSTRUCTION DOCUMENTS
 RECORD DRAWINGS

P. O. BOX 681, 107 FOREBES DRIVE
HOPKINSVILLE, KENTUCKY 42240
P: 270-886-5466 | F: 270-886-5467
www.bell.com



McLEAN COUNTY, KENTUCKY
NOT TO SCALE

COMPLETE DRAWING SET INCLUDES

DESCRIPTION	SHEET NO.
COVER SHEET	00
GENERAL NOTES	01
WATER LINE PLAN	02
WATER LINE DETAILS	03



GENERAL NOTES AND SPECIFICATIONS

WHERE BRANCH LINES ARE TO BE CONNECTED TO MAIN LINES... MINIMUM COVER OVER WATER PIPE TO BE 36" UNLESS OTHERWISE NOTED.

CONTRACTOR TO FURNISH CONCRETE BLOCKING AT ALL BENDS, TEES, PLUGS, AND JOINTS... CONCRETE SHALL BE 2800 PSI.

CONTRACTOR SHALL SUBMIT A NOTICE OF INTENT (NOI) TO THE KENTUCKY DIVISION OF WATER AT LEAST 48 HOURS BEFORE ANY CONSTRUCTION ACTIVITY BEGINS.

CONTRACTOR TO MEET/EXCEED TEMPORARY SEEDING REQUIREMENTS AND EROSION PREVENTION AND SEDIMENT CONTROL REQUIREMENTS.

DISINFECTION SPECIFICATION

DISINFECTION SHALL BE IN ACCORDANCE WITH ADOPTED AND AS AMENDED AS FOLLOWS... WATER LINES SHALL BE DISINFECTED.

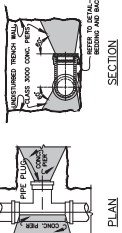
FOR TEAS TO AN EXISTING SYSTEM SUCH AS TAPPING VALVES WHERE DEPENDING ON THE MAIN SIZE OF SERVICE... DISINFECTION SHALL BE COMPLETED.

CONTRACTOR TO FURNISH CONCRETE BLOCKING AT ALL BENDS, TEES, PLUGS, AND JOINTS... CONCRETE SHALL BE 2800 PSI.

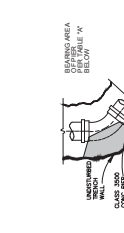
CONTRACTOR TO MEET/EXCEED TEMPORARY SEEDING REQUIREMENTS AND EROSION PREVENTION AND SEDIMENT CONTROL REQUIREMENTS.

CONTRACTOR TO MEET/EXCEED TEMPORARY SEEDING REQUIREMENTS AND EROSION PREVENTION AND SEDIMENT CONTROL REQUIREMENTS.

NOTE: MECHANICAL JOINT PLUG IS USED ON THE BRANCH... NO BLOCKING WILL BE REQUIRED ON THE PLUGS.



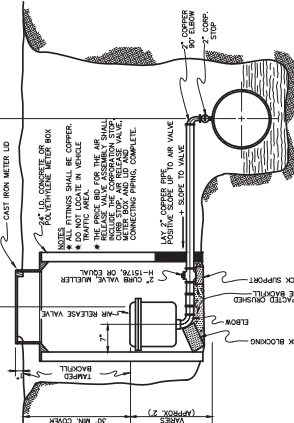
TYPICAL DETAIL OF CONCRETE BLOCKING AT TEES & PLUGS



TYPICAL DETAIL OF CONCRETE BLOCKING AT BENDS VERTICAL AND HORIZONTAL

Table 3A: Bearing Area Factor for Bore of Bend (Square Feet). Columns: Soil Type, Soil Bearing Pressure (PSF), Pile/Tube Area (sq ft), Bore of Bend (sq ft).

Table 3B: Multiplier for Pipe Test Pressure (PT). Columns: Pipe Dia. (in), Area (sq ft), Multiplier (PT), Multiplier for Pipe Test Pressure (PT).



AIR RELEASE VALVE ASSEMBLY

Project information block including Designer (MES), Date, and Project Name (McLean Middle and High School Turn Lane Water Line Relocation Water District).





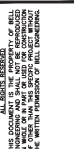
- LEGEND:**
- PROPOSED WATER LINE
 - EXISTING WATER LINE
 - NEW HYDRANT ASSEMBLY
 - NEW AUTOMATIC AIR RELEASE VALVE
 - PROPOSED UTILITY ASSEMBLY
 - ROAD RIGHT-OF-WAY
 - TELECOMMUNICATIONS LINES
 - NATURAL GAS LINE
 - SANITARY SEWER MANHOLE
 - TELECOMMUNICATIONS FEDERAL

DIVISION	652-70
CONTRACT NO.	JANUARY 2020
DATE	1 OF 10
SHEET NO.	

WATER LINE PLAN

**McLEAN MIDDLE AND HIGH SCHOOL TURN LANE
 WATER LINE RELOCATION
 NORTH McLEAN COUNTY DISTRICT
 McLEAN COUNTY, KENTUCKY**

(650) 378-4413
 Lexington, KY
 Hopewellville, KY (270) 598-4406
 Somerset, KY (606) 495-4011
 Adairville, NC (606) 774-5489

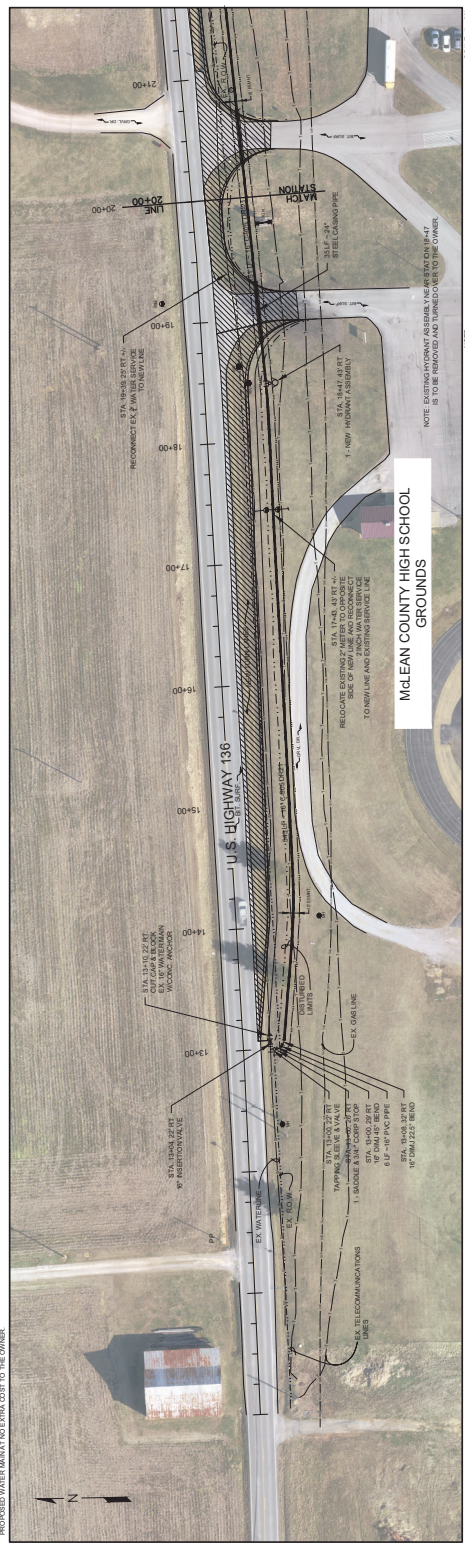


ALL NOTES REFERRED TO IN THIS DRAWING ARE THE PROPERTY OF MICHAEL A. D. CONSTRUCTION. IT IS THE RESPONSIBILITY OF THE USER TO OBTAIN THE FULL TEXT OF THESE NOTES FROM THE PROJECT MANUAL AND TO READ THEM CAREFULLY IN CONNECTION WITH THE DRAWING. THE USER'S FAILURE TO DO SO WILL BE AT THEIR OWN RISK.

GRAPHIC SCALE

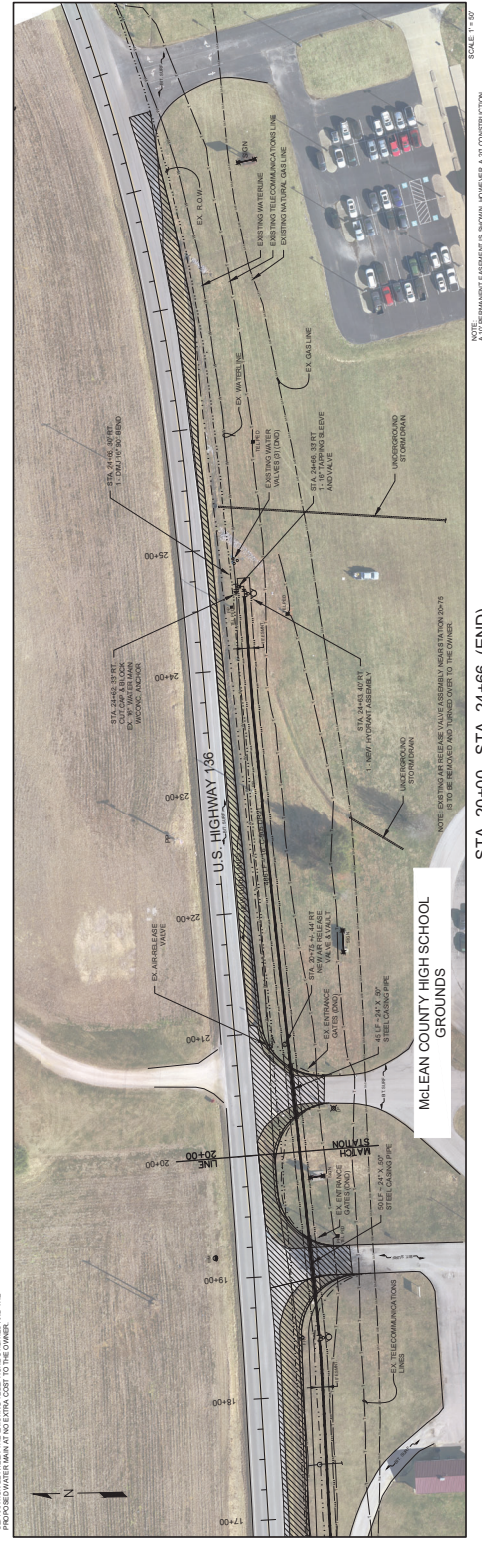
SCALE:

DESIGNER	MES	DATE	BY	REVISION
DRAWN	MES			
CHECKED	RJP			
APPROVED	RJP			



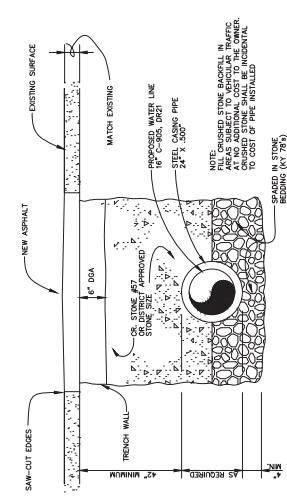
NOTE:
 THE LOCATION OF TELEPHONE UTILITIES SHOWN ON THE DRAWINGS ARE THE ACTUAL LOCATION OF TELEPHONE UTILITIES. THE LOCATION OF THE WATER MAIN MAY BE RELOCATED TO MAINTAIN A FOOT MINIMUM PROVIDED WATER MAIN IS NOT EXISTING TO THE OWNER.

STA. 13+00 - STA. 20+00

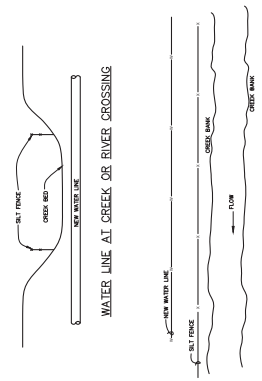


NOTE:
 THE LOCATION OF TELEPHONE UTILITIES SHOWN ON THE DRAWINGS ARE THE ACTUAL LOCATION OF TELEPHONE UTILITIES. THE LOCATION OF THE WATER MAIN MAY BE RELOCATED TO MAINTAIN A FOOT MINIMUM PROVIDED WATER MAIN IS NOT EXISTING TO THE OWNER.

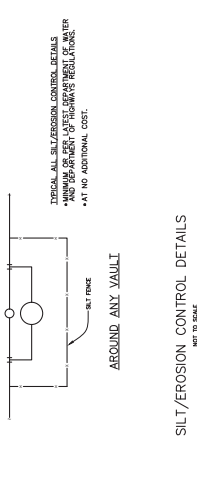
STA. 20+00 - STA. 24+00, (END)



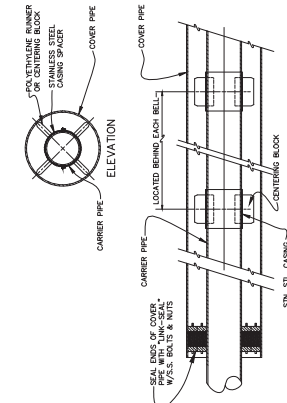
BACKFILL REQUIREMENT FOR PIPE IN COUNTY ROADS, DRIVEWAYS NOT STATE HIGHWAY
NOT TO SCALE



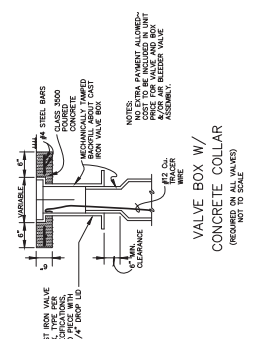
WATER LINE AT CREEK OR RIVER CROSSING
NOT TO SCALE



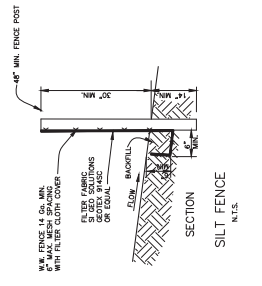
SILT/EROSION CONTROL DETAILS
NOT TO SCALE



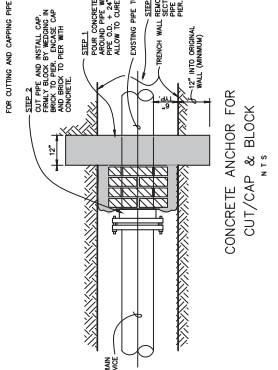
CARRIER PIPE POSITIONING IN COVER PIPE
NOT TO SCALE



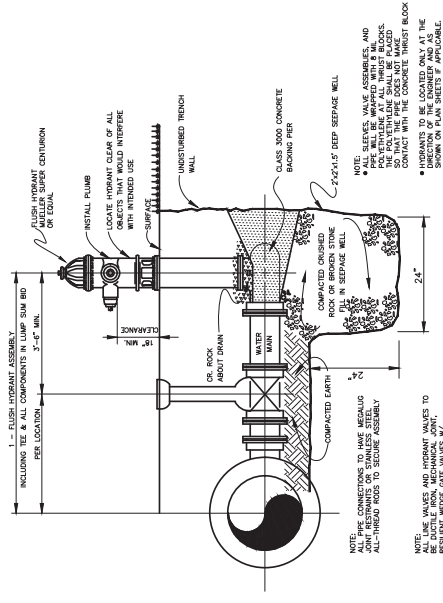
VALVE BOX W/ CONCRETE COLLAR
(REQUIRED ON ALL VALVES)
NOT TO SCALE



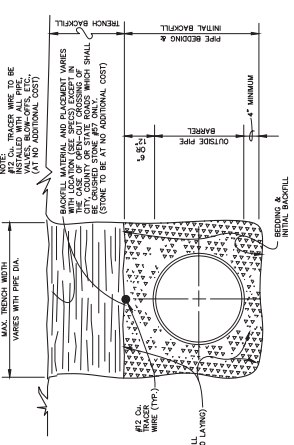
SILT FENCE
NOT TO SCALE



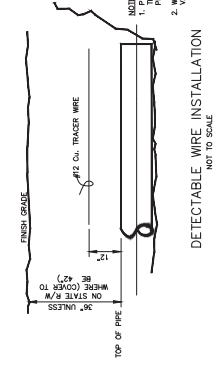
CONCRETE ANCHOR FOR CUT/CAP & BLOCK
NOT TO SCALE



FLUSH HYDRANT SETTING
NOT TO SCALE



DETAIL BEDDING & BACKFILL WATER MAIN INSTALLATION
NOT TO SCALE



DETECTABLE WIRE INSTALLATION
NOT TO SCALE



DIVISION	652-22-01
CONTRACT NO.	652-22-01
DATE	JANUARY 2010
SHEET NO.	3 OF 3

STANDARD DETAILS

McLEAN MIDDLE AND HIGH SCHOOL TURN LANES WATERLINE RELOCATION NORTH McLEAN COUNTY WATER DISTRICT McLEAN COUNTY, KENTUCKY

Location, KY (609) 298-5432
Asheville, NC (828) 774-5489



DESIGNER	MES	DATE	BY	REVISION
DRAWN	MES			
CHECKED	RJP			
APPROVED	RJP			

SCALE: AS NOTED

DESIGNER	MES	DATE	BY	REVISION
DRAWN	MES			
CHECKED	RJP			
APPROVED	RJP			